


SUSTAINABLE
CONSTRUCTION SUMMIT

EPFL Overview

An aerial photograph of the EPFL campus in Lausanne, Switzerland, showing various modern buildings, green spaces, and a large circular structure in the center. The sky is blue with scattered white clouds.

**Stéphanie P.
Lacour**
Vice-President for
Strategic Initiatives
(VPS)

Olympic Museum
January 14th, 2025



O U T L I N E

EPFL at the glance

Sustainable initiatives

EPFL at the glance

**14'012**

Students

**372**

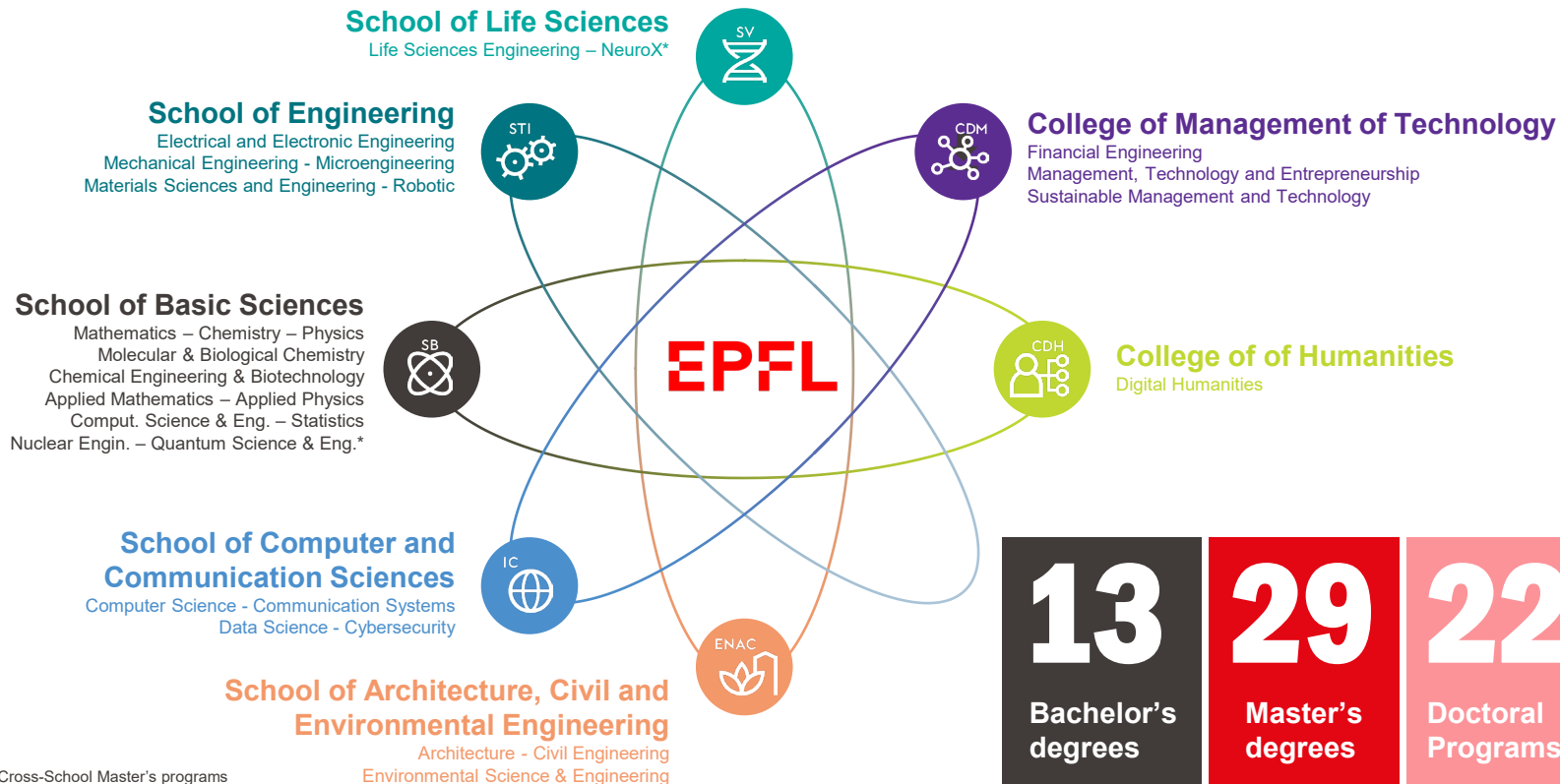
Professors

**6'530**Employees
(incl. Phd)**+130**

Nationalities



From Architecture, to Mathematics, to Engineering, Life Sciences and Computer Science



*Cross-School Master's programs

1.

Sustainability and Energy Transition



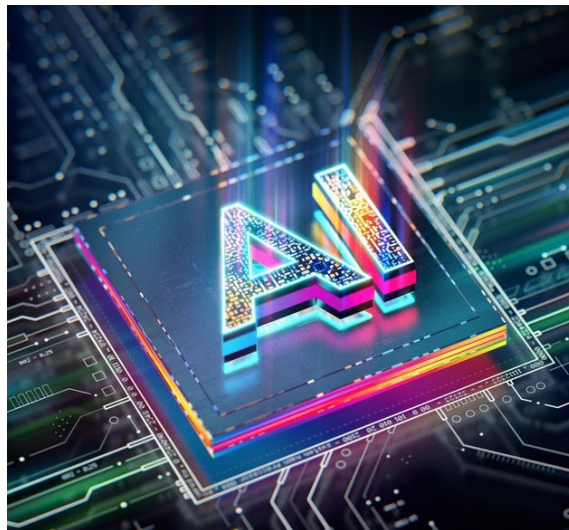
2.

Healthcare Innovation



3.

Artificial Intelligence



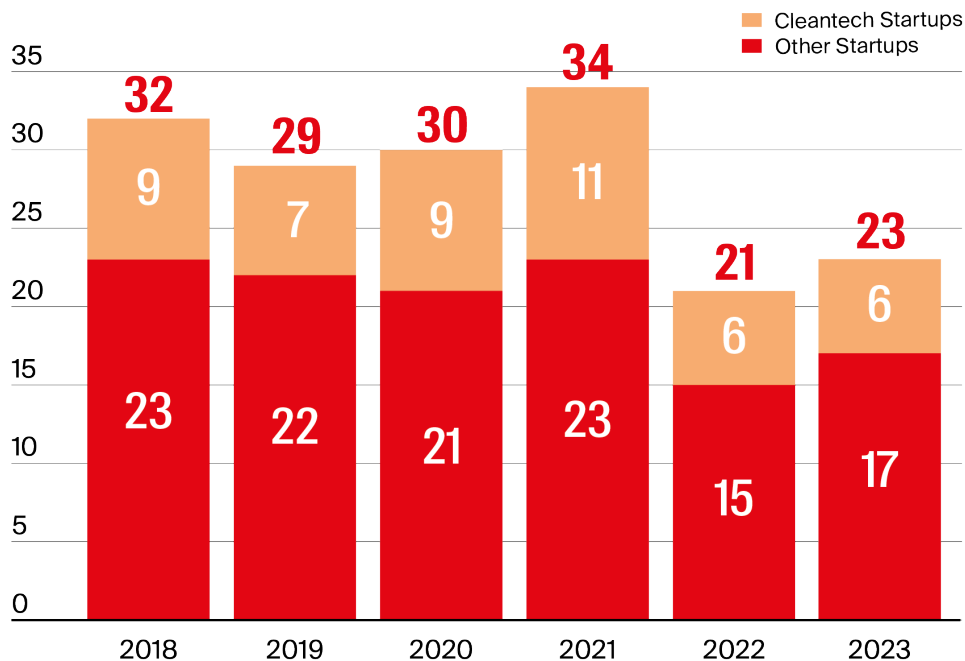
STRATEGIC INITIATIVES @ EPFL

EPFL, a flourishing ecosystem...

+500

Start-ups have been created over the last 50 years at EPFL

40 Number of new EPFL startups



Success

TOP 100 Swiss Startup Award 2024

27 EPFL startups in the TOP 100

N1



N2



TOP 10

*

*

BL'OM



* New entries



Source: <https://www.top100startups.swiss-Magazine>



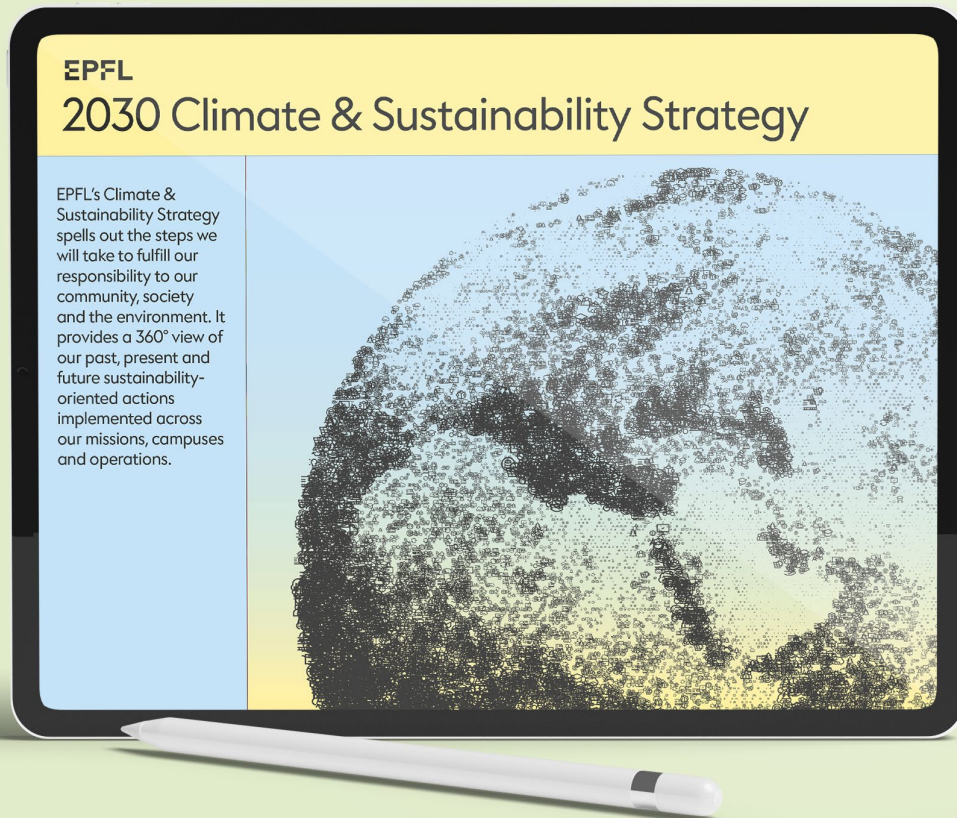
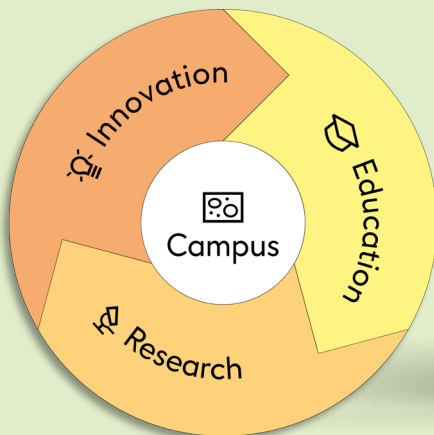
O U T L I N E

EPFL at the glance

Sustainable initiatives

EPFL's commitment to Sustainability

Interconnection between
education, research,
innovation and campus
operations



Our students learn by doing



Swiss Solar Boat

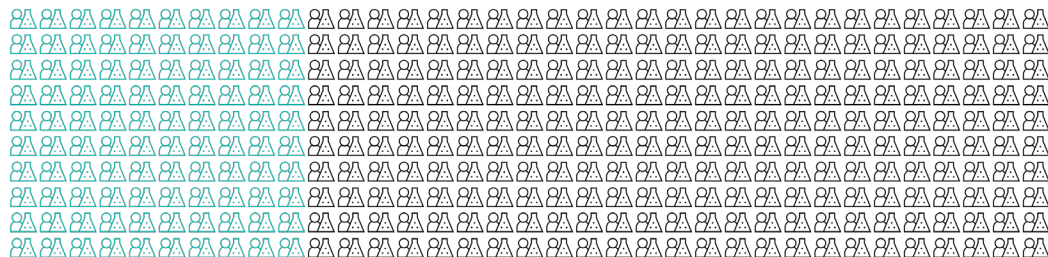




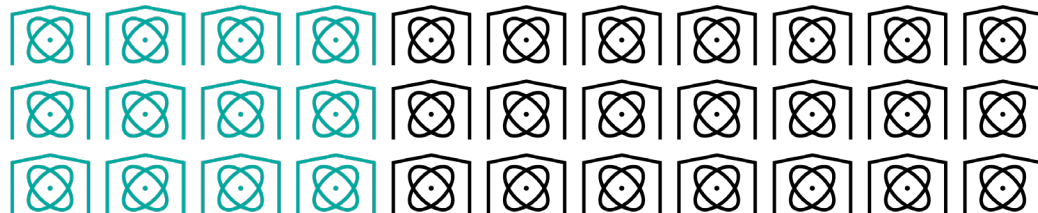
Research

Laboratories, centers and faculties active in sustainable research at EPFL

100 / 350
Laboratories



12 / 33
Interdisciplinary
Centers



6 / 7
Faculty/Colleges





- The S4S initiative is intended to leverage our strengths in research, education and innovation to develop technology in the areas of clean energy, power storage and carbon capture, use, and storage.


EPFL

CALL

SOLUTIONS 4 SUSTAINABILITY

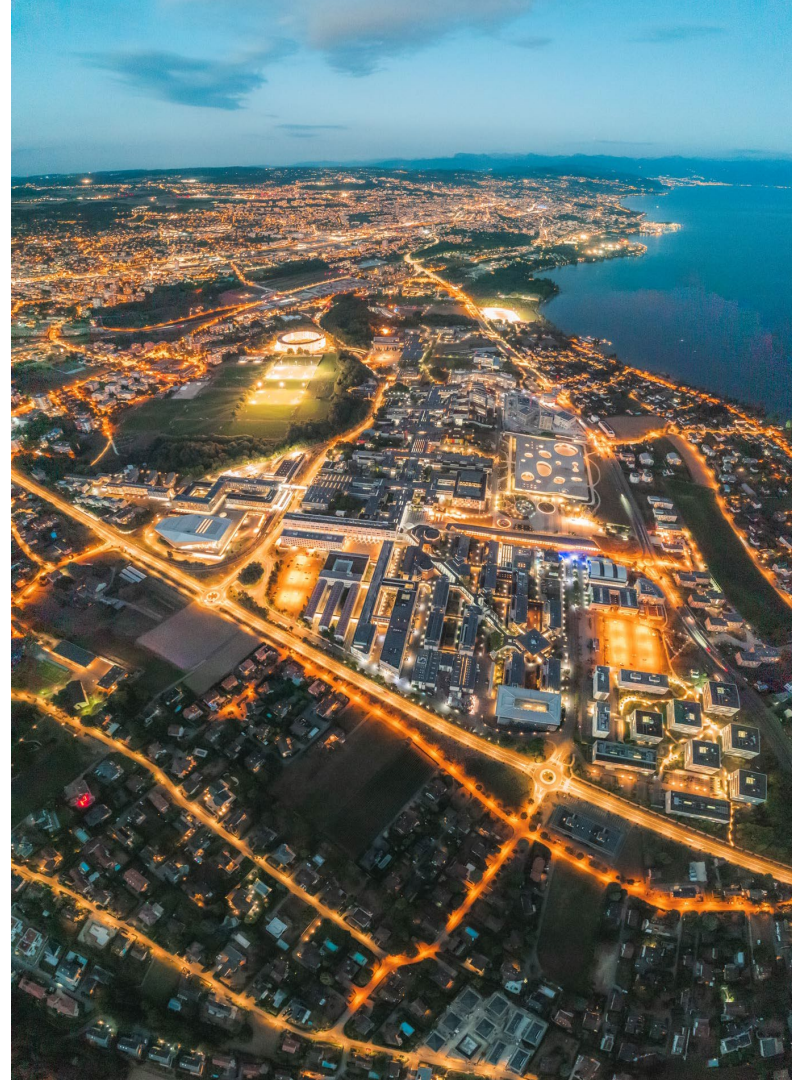
Open to EPFL faculty, researchers, collaborators and students.

■ EPFL



Sunday 19
January
2023 24:00
Deadline,
EPFL only

1





- P2X @Energypolis (Valais/Wallis)
- Power grids
- Highly efficient renewable energy harvesting
- Energy efficiency in the built environment
- Durable construction materials



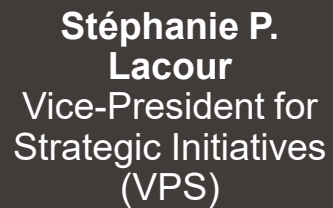
New Centre for Worldwide Sustainable Construction

- Head: **Prof. Karen Scrivener**
- The CWSC considers the entire construction chain, from planning to reuse and recycling, as part of a circular approach.
- From sustainable materials (low-carbon concrete, wood, etc.) through the construction, conversion and renovation processes to the finished building.
- Potential partnership between EPFL, Empa, HEIA-FR and UNIFR on all aspects of construction



A large red rectangular block containing the text "Thank you" in a white, bold, sans-serif font, positioned in the upper left area of the slide.

Thank you

A dark grey rectangular block containing the name and title of Stéphanie P. Lacour in a white, sans-serif font, positioned in the lower right area of the slide.

**Stéphanie P.
Lacour**
Vice-President for
Strategic Initiatives
(VPS)

A white rectangular block containing the event name and date in a black, sans-serif font, positioned at the bottom center of the slide.

Olympic Museum
January 14th, 2025

